

SPRING 2007

from house to HOME™

Southern Splendor

A Georgian Mansion
In Daphne

Experience
SPACE
INSIDE WITH SARAH SUSANKA

ENHANCING
CURB APPEAL
WITH PLANTS
AREA PROFESSIONALS OFFER TIPS

AREA **CRAFTSMEN**
BREATHE NEW LIFE INTO OLD FURNITURE

MAXIMIZE
THE IMPACT
OF POWDER ROOMS
LOCAL DESIGNERS PROVIDE SUGGESTIONS

THE PRESS-REGISTER'S HOME & LIFESTYLE MAGAZINE

True Southern Styling

This new Daphne home has historical elements that make a stylish statement for the Old South



⊖ Balance and symmetry combine with quality workmanship to bring authentic lines to this Georgian-style home.

⊕ A classic pose, the boathouse hoists the vehicle just above the water in preparation for the next outing. The structure was rebuilt after Hurricane Katrina roared through just at the time construction began.

⇒ Tucked beneath the portico, the slate-tiled dining porch is a great place to enjoy afternoon tea.

⇒ ⊕ White-painted brick and broad geometry give dimension to the backyard fire pit, which is surrounded by lush landscaping.

TEXT MARY NESTOR
IMAGES JONATHAN HARPER

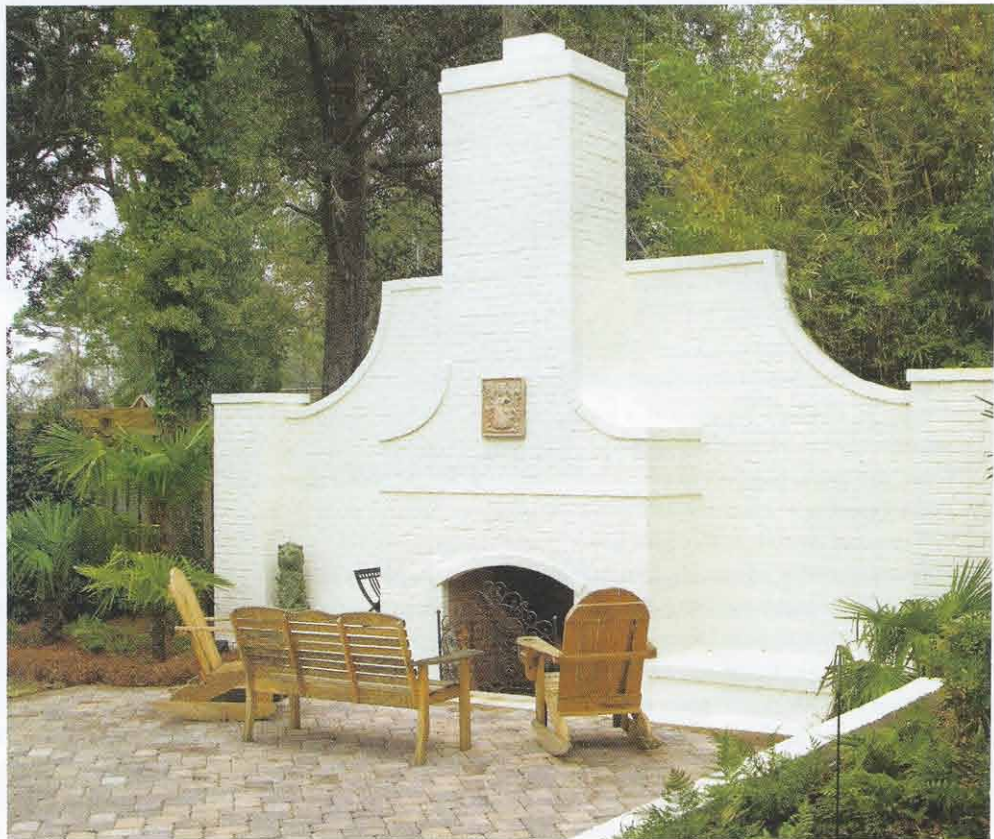
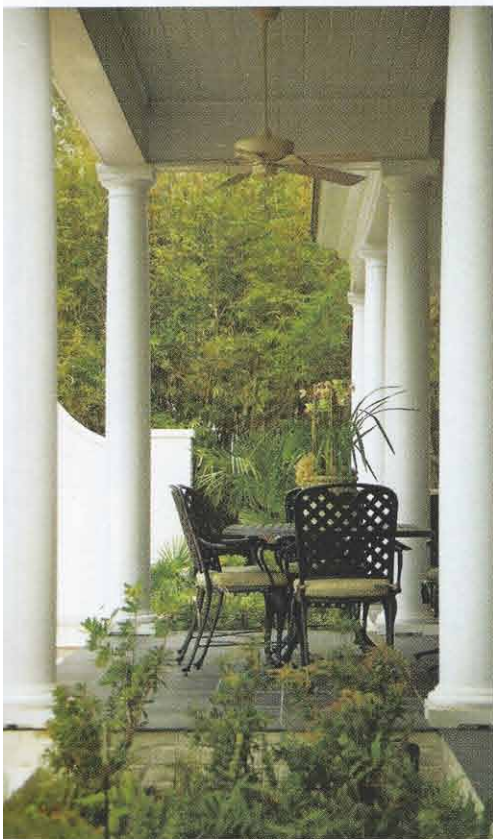
The Daphne home of Jody and Patrick Couch offers all the evidence that charming southern landscapes are timeless treasures. From the tall columns and measured elements that define the façade to the sensual sweep of a curved stairway in the entrance foyer, this Georgian Revival mansion is a brand-new home with an historical reference that makes it seem as if it were here all along.

Architect Mac Walcott, a principal of Walcott Adams Verneulle Architects, along with intern architect Seth Neal, developed the blueprint to maximize the home's footprint on this waterfront lot. True to the period, the home has an elegant curb appeal with a more private, less formal rear,

which Walcott says reflects the two different ways of living that defined the Old South.

In front, painted brick is contrasted with the rich luster of custom-made mahogany doors and the black accents of reclaimed antique shutters and wrought-iron balcony rails. The porch is anchored with two-story columns and covered by a pediment roofline. Cobblestone pavers form the motor court. A long, covered walkway leads to the detached garage.

The back of the home features slate porches below the balcony, which overlooks the water. Ceiling fans spin from their mounts, designed by the builder using old-fashioned, v-groove methods and painted "robin's





⊙ The signature of the foyer is the sensual line of this sweeping staircase. Heart-of-pine flooring runs throughout the main level of the home.

Ⓣ In the great room, the floor-level hearth and plank-board ceilings lend a distinct voice to this Georgian mansion. The homeowner and her decorator worked backward from upholstery to drapes to wall colors. Antique area rugs were the final addition.

egg" blue. Landscape architect Paul Fontenot of Fairhope, Alabama, created an outdoor fire pit with a broad chimney. It was built from the same painted brick and includes a patio of cobblestone pavers. True to form, the good, old-fashioned pleasures are not far off. Evenings are spent enjoying a warm fire and good company, as the sun goes down and the cool air rolls in from the bay.

Instrumental to everything, from subtle changes in the blueprint to the shades of blue in the window treatments, was interior designer Chris Hall, owner of dchDesigns in Destin. Involved from the start, Hall worked directly with Walcott and his clients to integrate specific details and then followed up with Jody to make sure that the interiors reflected the luxury of Old Southern lifestyles.

Randy Crocker and his son Eric, owners of Randy and Eric Crocker Homebuilders in Daphne, completed the team. All parties agree that the project worked because there was great energy, among themselves,





⌚ True to her Southern roots, the homeowner chose a Viking range because the company is headquartered in Mississippi. Other elements in the kitchen are painted woods, heart-of-pine floors, elegant lighting, and tailored window treatments.



⌚ Creamy, white roses are the perfect accompaniment to the gold-rimmed China on the formal dining table.

⌚ The formal dining table with its fabric-upholstered Parson's chairs is illuminated by an antique chandelier. Detailed trim on the walls creates an additional frame for family portraits.

and great direction from their client.

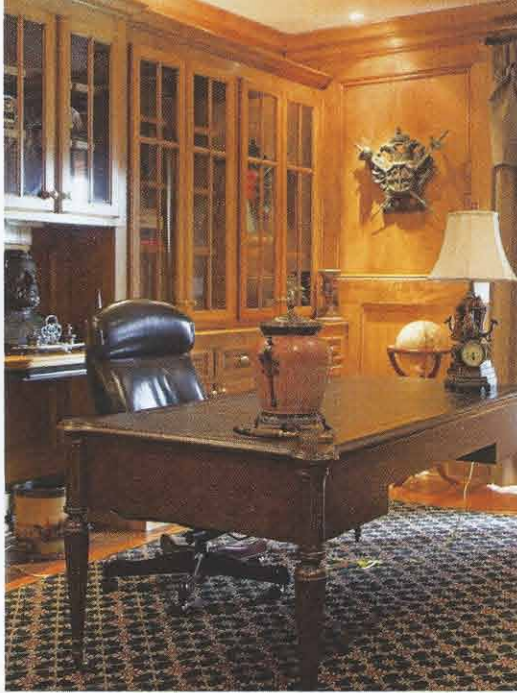
"I'm from Mississippi, and my husband is from Atlanta. And we both love Southern architecture," explains Jody. "I wanted something I could never tire of. This home is timeless," she says.

Part of this timeless design is the fact that the builders utilized reclaimed woods wherever they could and distressed the materials that they purchased new. Reclaimed heart-of-pine flooring runs through the main level; and the casework and crown molding throughout includes rich cypress, creamy poplar, lustrous mahogany, and stained bird's eye maple with a beeswax rub.

Inside, the decorator and the homeowners worked together to establish an authentic motif. "There are no clues that the home hasn't been there for 150 years," says Hall. He says the colors they chose—browns, blues, and green—are popular today but are actually a throwback to an earlier time. "It's a palette that was used many, many years ago," he says. "Pre-Civil War, browns (and greens) were the easiest things to get dyes for," he explains.

Jody says Hall had an excellent ability to interpret what she was trying to achieve. They agreed that fabrics and furnishings should come before wall paint and rugs. "That is typical of the way I like to work," admits Hall.

➤ Stained bird's eye maple was rubbed with beeswax to give it a lustrous shine in the upstairs study. All of the casework was hand crafted by the building team of Randy and Eric Crocker.



"I choose wallpaper and paint last, because the variable is with the fabrics. If you paint a room first you can never find the fabric. But if you chose the fabric first, you can get paint to match anything."

Hall's signature window treatments and Jody's formal chandeliers combine to bring a finished polish and classic look to every room—the kitchen is the perfect example. Brick walls, hardwood floors, and painted cabinets speak to the elements of French Country. These choices lift the room from simple to sublime.

...this Georgian mansion is the perfect balance of the sum of its parts.

Despite the fact that the home has so many interesting components, dissecting it to find out what makes it work is actually almost impossible. Even when exposing how tall ceilings create a natural circulation, intricate craftsmanship makes art of the plank-board ceilings, and the selection and cut of every fabric is critical, there is still a mysterious strength to the whole. Not unlike the talented team and shared vision that brought the home to life, this Georgian mansion is the perfect balance of the sum of its parts. ■



⌚ Antiques are an integral component, but the house also features cutting-edge technology. Tucked beside this old chair is a speaker, which feeds from the surround sound system and pipes music from a limitless playlist.

➤ In keeping with the homeowner's love of large furnishings and simple color schemes, the master bedroom features a four-post, canopy bed draped in a soothing palette of heavy fabric.

